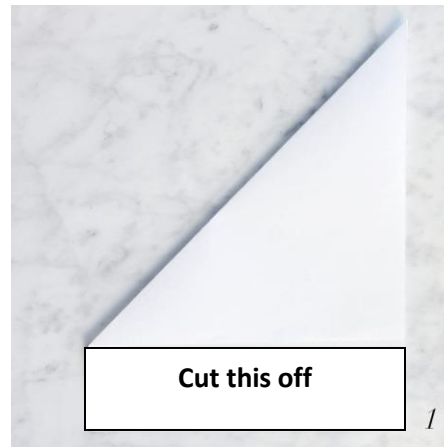
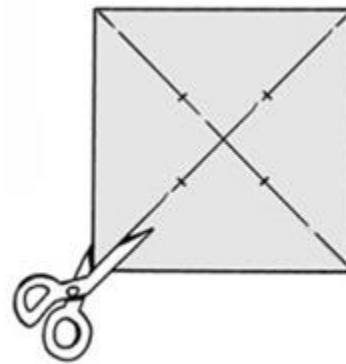
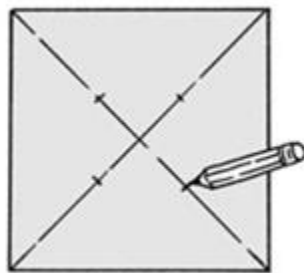


WINDS OF CHANGE- (CREATING THE PINWHEEL)



1-Fold corner of 8.5X11 paper to 90 degree angle. *****If you already have square paper, skip step #1 and 2*****

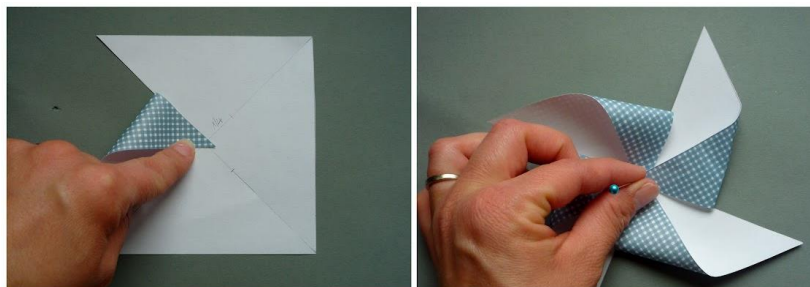
2- Cut the strip off of the bottom. You will be left with a perfect square.



3- Using a ruler or any straight edge, draw a line that connects opposite corners, do the same to the other corners.

4- Next, make a mark approximately $\frac{3}{4}$ way in to the center.

5. Using scissors, cut the lines up to the mark. Repeat for each side.



6- Put glue in the very center. Bring every other end to the center making sure they overlap each other. Glue as you overlap. Secure with push pin.

7- Pin to dowel rod approximately 1 inch from the top of the dowel rod.

8- Place pinwheel in flower pot, in your front yard, or anywhere you want. This pinwheel is NOT weather proof.